





OPEN ACCESS

# Myopia control effect of defocus incorporated multiple segments (DIMS) spectacle lens in Chinese children: results of a 3-year follow-up study

Carly SY Lam <sup>1,2</sup>, Wing Chun Tang,<sup>1</sup> Paul H Lee <sup>3</sup>, Han Yu Zhang <sup>1</sup>, Hua Qi,<sup>4</sup> Keigo Hasegawa,<sup>4</sup> Chi Ho To<sup>1,2</sup>

► Additional material is published online only. To view please visit the journal online (<http://dx.doi.org/10.1136/bjophthalmol-2020-317664>).

<sup>1</sup>Centre for Myopia Research, School of Optometry, The Hong Kong Polytechnic University, Kowloon, Hong Kong

<sup>2</sup>Centre for Eye and Vision Research (CEVR), Hong Kong, Hong Kong

<sup>3</sup>School of Nursing, The Hong Kong Polytechnic University, Kowloon, Hong Kong

<sup>4</sup>Technical Research & Development Department, Hoya Corporation Vision Care Section, Shinjuku-ku, Tokyo, Japan

## Correspondence to

Professor Carly SY Lam, Centre for Myopia Research, School of Optometry, The Hong Kong Polytechnic University, Kowloon, Hong Kong; [carly.lam@polyu.edu.hk](mailto:carly.lam@polyu.edu.hk)

Received 4 August 2020

Revised 8 February 2021

Accepted 20 February 2021

Published Online First

17 March 2021

## ABSTRACT

**Aims** To determine myopia progression in children who continued to wear the defocus incorporated multiple segments (DIMS) lenses or switched from single vision (SV) to DIMS lenses for a 1-year period following a 2-year myopia control trial.

**Methods** 128 children participated in this study. The children who had worn DIMS lenses continued to wear DIMS lenses (DIMS group), and children who had worn SV lenses switched to wear DIMS lenses (Control-to-DIMS group). Cycloplegic spherical equivalent refraction (SER) and axial length (AL) were measured at 6-month interval. Historical controls were age matched to the DIMS group at 24 months and used for comparing the third-year changes.

**Results** Over 3 years, SER and AL changes in the DIMS group (n=65) were  $-0.52 \pm 0.69$ D and  $0.31 \pm 0.26$  mm; these changes were not statistically significant over time (repeated measures analysis of variance,  $p > 0.05$ ). SER ( $-0.04 \pm 0.38$ D) and AL ( $0.08 \pm 0.12$  mm) changes in the Control-to-DIMS group (n=55) in the third year were less compared with the first (mean difference =  $0.45 \pm 0.30$ D,  $0.21 \pm 0.11$  mm,  $p < 0.001$ ) and second ( $0.34 \pm 0.30$ D,  $0.12 \pm 0.10$  mm,  $p < 0.001$ ) years. Changes in SER and AL in both groups over that period were significantly less than in the historical control group (DIMS vs historical control: mean difference =  $-0.18 \pm 0.42$ D,  $p = 0.012$ ;  $0.08 \pm 0.15$  mm,  $p = 0.001$ ; Control-to-DIMS versus historical control: adjusted mean differences =  $-0.30 \pm 0.42$ D,  $p < 0.001$ ;  $0.12 \pm 0.16$  mm,  $p < 0.001$ ).

**Conclusions** Myopia control effect was sustained in the third year in children who had used the DIMS spectacles in the previous 2 years and was also shown in the children switching from SV to DIMS lenses.

## INTRODUCTION

The prevalence of myopia is growing alarmingly worldwide, especially in East Asian populations.<sup>1–3</sup> High myopia is associated with an increased risk of sight-threatening eye disease<sup>4–6</sup> creating a long-term burden on economies and public healthcare.<sup>7,8</sup> There is no doubt that myopia is a significant public health issue and a global concern.<sup>8</sup> Effective interventions for myopia management and reduction would alleviate this problem.

Currently, a variety of modalities are used for myopia control in children.<sup>9–11</sup> High-dose (1%) atropine eye-drops seem the most effective in myopia control, but the associated side effects, such

as photophobia and blurred near vision, hinder its wide clinical application.<sup>12</sup> In recent years, some studies have reported that low-dose (0.01%) atropine treatment has yielded positive results with minimal side effects and low myopic rebound.<sup>13–15</sup> Optical treatments, including orthokeratology,<sup>16–18</sup> executive top bifocal spectacles<sup>19</sup> and multifocal soft contact lenses incorporating myopic defocus<sup>20–24</sup> have also shown promising results in slowing myopia progression. However, each method has limitations.<sup>11</sup>

The defocus incorporated multiple segments (DIMS) spectacle lens is designed to control myopia in children, based on the principle of myopic defocus and simultaneous vision. It is a dual-focus spectacle lens consisting of a central optical zone for correcting distance refractive error, and a batch of tiny circular segments with a relative positive power of 3.50D equally distributed throughout the mid-peripheral area in a honeycomb pattern.<sup>25</sup> Thus, the DIMS lens imposes myopic defocus while providing clear vision for the wearer simultaneously at all viewing distances. A 2-year double-masked randomised controlled trial (RCT) (ClinicalTrials.gov: NCT02206217) showed that DIMS lens wear slowed childhood adjusted myopia progression significantly by 52% and axial elongation by 62% compared with regular single vision (SV) spectacle lenses wear over 2 years.<sup>25</sup>

Our aims here are to determine (1) if myopia retardation (as measured by changes in spherical equivalent refraction (SER) and AL) continues in the third year of DIMS wear and (2) if myopia retardation is exhibited in the first year of DIMS wear by the original SV control group; both groups will be compared with a new historical control group.

## MATERIALS AND METHODS

### Study participants

Ethnic Chinese children who had completed the 2-year RCT<sup>25</sup> (NCT02206217, between August 2014 and July 2017) were invited to participate in this third-year follow-up study. Written assent and informed consent were obtained from the children and their parents respectively before participation.

Children who had worn DIMS lenses in the RCT continued to wear DIMS lenses in the third year (DIMS group). The children in the original control group were offered the DIMS treatment



© Author(s) (or their employer(s)) 2022. Re-use permitted under CC BY-NC. No commercial re-use. See rights and permissions. Published by BMJ.

**To cite:** Lam CSY, Tang WC, Lee PH, et al. *Br J Ophthalmol* 2022;**106**:1110–1114.

and this gave us the opportunity to evaluate if the DIMS lenses could provide myopia control in the Control-to-DIMS group similar to that observed in the original DIMS group.

### Study procedures and data collection

The primary and secondary outcomes were the changes in SER and axial length (AL). The procedures of data measurement followed those in the trial of DIMS lenses.<sup>25</sup> SER and AL were measured at 6-month intervals. SER was measured by cycloplegic autorefractometry using an open-field autorefractor (Shin-Nippon NVision-K5001, Ajinomoto Trading Inc.). AL was measured by partial coherence interferometry using an IOL Master (Carl Zeiss Meditec). Cycloplegia was induced by instillation of one drop of alcaine 0.5%, followed by one to two drops of cyclopentolate HCL 1%. The measurements were taken 30 min after the instillation of eye drops, and cycloplegia was considered achieved when the amplitude of accommodation was less than 2.00D as measured using an RAF rule. An average of five autorefractations and AL measurements for each eye was used for data analysis.

### The historical control group

Since the children originally in the control group switched to wear DIMS lenses in the third year, they could not be used as the 'control' to assess effectiveness on myopia control. Therefore, we obtained a historical control group by reviewing clinical records from the Optometry Clinic, PolyU for 2017–2019. The criteria for selection were based on the inclusion and exclusion criteria in the original RCT. Subjects were healthy myopic ethnic Chinese children who attended eye examinations in the clinic with at least 12-month follow-up data. They had not received any myopia interventions and were matched for age (between 10 and 15 years) and SER ranges ( $-1.00$  to  $-5.50$ D) with the DIMS subjects at the end of the 2-year RCT. Annual myopia progression and AL changes in this group of children were calculated and compared with the third-year changes in the DIMS and Control-to-DIMS groups.

### Statistical analysis

All statistical analyses were performed using SPSS V.20.0. Baseline characteristics and the changes in SER and AL are presented as mean $\pm$ SD. The right eye data only were used for analysis as there was no statistically significant difference between the left and the right eye data.

Following Kolmogorov-Smirnov tests for distribution, unpaired t-tests, Mann-Whitney U tests or repeated measures analysis of variance (ANOVA) tests were used as appropriate. Pearson's correlation coefficient analyses were used to determine relationships between continuous variables and  $\chi^2$  tests for categorical data.

For both the DIMS group and Control-to-DIMS group, myopia progression and changes in AL in years 1, 2 and 3 were calculated and compared by repeated measures ANOVA and post hoc pairwise comparisons using Bonferroni corrections were performed for determining where the differences laid. Myopia progression and change in AL were calculated for the historical control group, for which we had one (12 months) set of data, and were compared with the third-year changes of two experimental groups by multiple linear regression approach with adjusting confounding covariates, such as age, sex, SER and AL.

## RESULTS

### Subject profile and baseline data

Figure 1 shows the number of subjects recruited and those lost to follow-up over 3 years. One hundred and sixty Chinese children completed the 2-year RCT and 128 of these agreed to participate in the third-year study. We compared the data between the subjects who joined and those who declined to join the third-year study for both the DIMS and Control-to-DIMS groups. No significant differences were found in terms of their age, gender, baseline myopia or AL, myopia progression or axial elongation in the previous 2-year trial ( $p>0.05$ ) (online supplemental eTable 1).

At the end of the third year, 120 children (DIMS,  $n=65$ ; Control-to-DIMS,  $n=55$ ) completed the data collection. The mean age at enrolment (mean $\pm$ SD) was  $10.15\pm 1.52$  years and  $10.24\pm 1.42$  years in the DIMS and the Control-to-DIMS groups, respectively. The baseline SER of the DIMS group and the Control-to-DIMS were  $-2.98\pm 0.96$ D and  $-2.73\pm 0.99$ D, respectively. The baseline AL of the DIMS and the Control-to-DIMS were  $24.68\pm 0.82$  mm and  $24.57\pm 0.88$  mm. There were no statistically significant differences between the two groups with respect to age at enrolment, gender proportion, baseline myopia or baseline AL ( $p>0.05$ ).

### Changes in SER and AL

Figure 2A and table 1 present the mean and cumulative changes in mean SER and AL from baseline to 36 months in both groups. Figure 2B shows the trend in changes in SER and AL changes in the third year.

### The DIMS group

The mean changes in SER and AL in the DIMS group ( $n=65$ ) were  $-0.52\pm 0.69$ D and  $0.31\pm 0.26$  mm over 3 years (table 1). The myopia progression and axial elongation did not change significantly

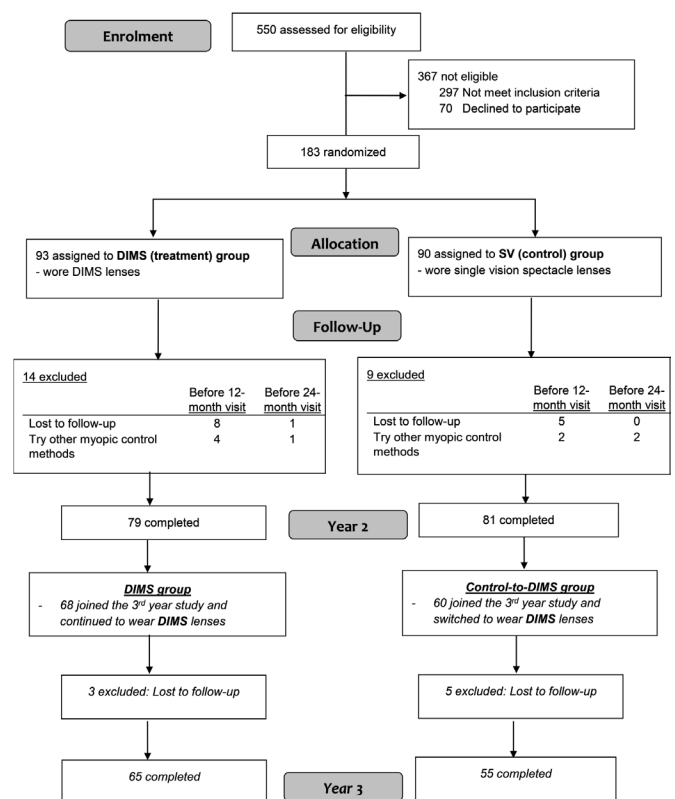
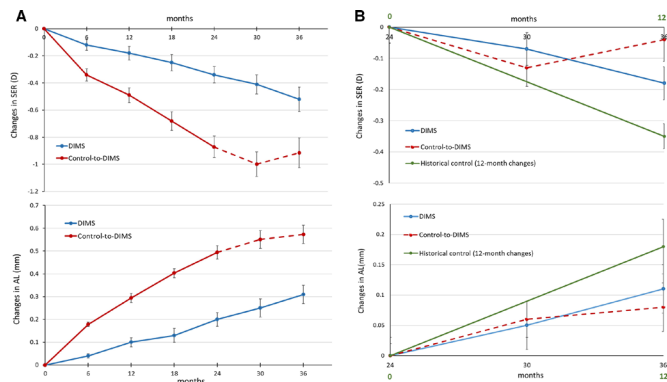


Figure 1 Subject numbers over 3 years. DIMS, defocus incorporated multiple segments; SV, single vision.



**Figure 2** (A) Changes in spherical equivalent refraction (SER) and axial length (AL) from baseline to 36 months. The red dotted line represents the period (24–36 months) during which the previous single vision control group wore defocus incorporated multiple segments (DIMS) lenses. (B) The third-year changes in SER and AL in the DIMS and Control-to-DIMS groups. The green line shows the 12-month changes in SER and AL in the historical control group.

over time (repeated measures ANOVA,  $p > 0.05$ ). The mean annual changes in SER and AL in the DIMS group were  $-0.18 \pm 0.25$ D and  $0.10 \pm 0.09$  mm over 3 years.

**The Control-to-DIMS group**

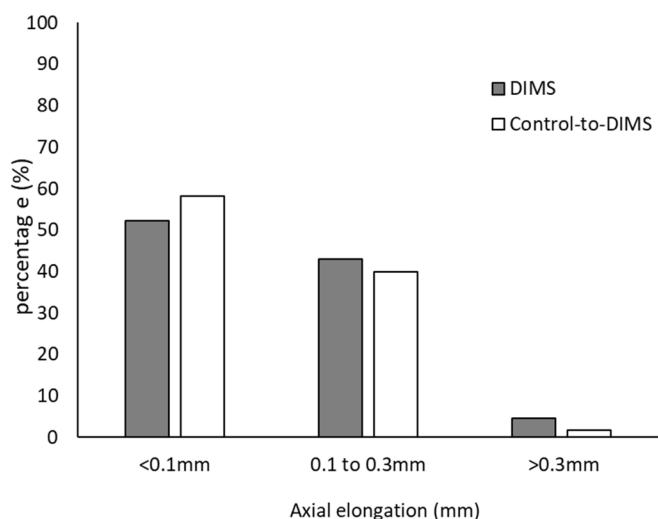
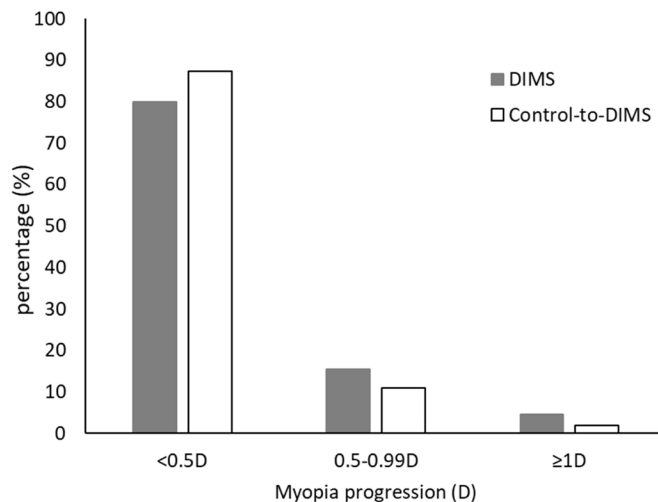
In the Control-to-DIMS group ( $n=55$ ), myopia progression and axial elongation were significantly different between the 3 years (repeated measures ANOVA,  $p < 0.001$ ). Post hoc analyses indicated that their myopia progression and axial elongation in the third year were significantly decreased compared with the first (mean

**Table 1** Mean and cumulative changes in the cycloplegic SER and AL from baseline to 36 months in the DIMS group and Control-to-DIMS group

Time (months)	Mean $\pm$ SD		Changes in SER (D)	
	DIMS (n=65)	Control-to-DIMS (n=55)	DIMS (n=65)	Control-to-DIMS (n=55)
0	SER (D)	-2.98 $\pm$ 0.96	-2.73 $\pm$ 0.99	-
6	SER (D)	-3.10 $\pm$ 0.97	-3.07 $\pm$ 1.02	-0.12 $\pm$ 0.30
12	SER (D)	-3.16 $\pm$ 0.97	-3.22 $\pm$ 1.08	-0.18 $\pm$ 0.37
18	SER (D)	-3.23 $\pm$ 0.96	-3.41 $\pm$ 1.09	-0.25 $\pm$ 0.50
24	SER (D)	-3.32 $\pm$ 1.00	-3.61 $\pm$ 1.15	-0.34 $\pm$ 0.52
30	SER (D)	-3.39 $\pm$ 1.01	-3.73 $\pm$ 1.23	-0.41 $\pm$ 0.58
36	SER (D)	-3.50 $\pm$ 1.08	-3.65 $\pm$ 1.34	-0.52 $\pm$ 0.69
0	AL (mm)	24.68 $\pm$ 0.82	24.57 $\pm$ 0.88	-
6	AL (mm)	24.72 $\pm$ 0.81	24.75 $\pm$ 0.89	0.04 $\pm$ 0.10
12	AL (mm)	24.78 $\pm$ 0.81	24.86 $\pm$ 0.91	0.10 $\pm$ 0.14
18	AL (mm)	24.81 $\pm$ 0.81	24.97 $\pm$ 0.93	0.13 $\pm$ 0.18
24	AL (mm)	24.88 $\pm$ 0.80	25.06 $\pm$ 0.96	0.20 $\pm$ 0.21
30	AL (mm)	24.93 $\pm$ 0.79	25.12 $\pm$ 0.99	0.25 $\pm$ 0.24
36	AL (mm)	24.99 $\pm$ 0.80	25.14 $\pm$ 1.01	0.31 $\pm$ 0.26

The grey blocks indicate the period of wearing DIMS lenses in the Control-to-DIMS group.

AL, axial length; Control-to-DIMS, subjects wore single vision spectacle lens during the 2-year randomised controlled trial and switched to wear DIMS lens; D, dioptres; DIMS, defocus incorporated multiple segments; SER, spherical equivalent refraction.



**Figure 3** Distributions of myopia progression and axial elongation in the third year. DIMS, defocus incorporated multiple segments.

difference =  $0.45 \pm 0.30$ D,  $0.21 \pm 0.11$  mm,  $p < 0.001$ ) and second years (mean difference =  $0.34 \pm 0.30$ D,  $0.12 \pm 0.10$  mm,  $p < 0.001$ ) (figure 2A).

**DIMS compared with Control-to-DIMS in SER and AL changes**

There were no statistically significant differences in myopia progression and axial elongation in the third year between the Control-to-DIMS group and the DIMS group ( $p > 0.05$ ) (figure 2B).

The myopia of 80% of the subjects in the DIMS group progressed by less than 0.5D in the third year, compared with 87% in the Control-to-DIMS group. Only 5% and 2% in the DIMS and Control-to-DIMS groups, respectively, had myopia progression more than 1D. 52% and 58% in the DIMS and Control-to-DIMS groups had axial elongation less than 0.1 mm (figure 3).

**DIMS compared with the historical control group in SER and AL changes**

The historical control group ( $n=76$ , 39 males and 37 females) had a mean age of  $12.19 \pm 0.71$  years, baseline SER and AL were  $-2.93 \pm 1.33$ D and  $24.77 \pm 0.91$  mm. Baseline characteristics of the historical control group did not differ statistically significantly from those of DIMS groups at 24 months ( $p > 0.05$ ) (online supplemental eTable 2).

The 12-month changes in SER and AL in the historical control group were  $-0.35 \pm 0.40\text{D}$  and  $0.18 \pm 0.14$  mm. The myopia progression in the DIMS group in the third year was significantly less than in the historical control group (mean difference =  $-0.18 \pm 0.42\text{D}$ ,  $p=0.012$ ). Axial elongation in the DIMS group was also less than in the historical control group (mean differences =  $0.08 \pm 0.15$  mm,  $p=0.001$ ).

### Control-to-DIMS compared with the historical control group in SER and AL changes

There were no significant differences between the baseline data of the historical control group and the 24-month data in the Control-to-DIMS group, in terms of age, sex or AL, however, SER was significantly less in the historical control group than in the Control-to-DIMS group ( $p=0.003$ ), the historical control group having been matched to the DIMS group (online supplemental eTable 3).

The children in the Control-to-DIMS group switched to wear DIMS spectacles in the third year. After adjusting for baseline SER, their myopia progression over that period was significantly slower than in the historical control group (mean differences =  $-0.30 \pm 0.42\text{D}$ ,  $p<0.001$ ). A similar result was found in the AL changes after controlling the confounding factor (mean differences =  $0.12 \pm 0.16$  mm,  $p<0.001$ ).

## DISCUSSION

Myopia progression and axial elongation were less in the subjects wearing DIMS lenses throughout the 3 years, first compared with the initial control group (which subsequently became the Control-to-DIMS group), and then in the last 12 months compared with the historical control group. In the DIMS group, myopia progression and axial elongation in the third year were similar to those in the first and second years (figure 2A—blue line).

### Overall myopia progression

The mean changes in SER and AL in the DIMS treatment group over the 3-year period were  $-0.52 \pm 0.69\text{D}$  and  $0.31 \pm 0.26$  mm. These findings are comparable with the corresponding findings in the 3-year trial with dual power contact lenses by Chamberlain *et al*<sup>24</sup> ( $-0.51 \pm 0.64\text{D}$  and  $0.30 \pm 0.27$  mm) and the 3-year trial with multifocal soft contact lenses by Walline *et al*<sup>26</sup> ( $-0.60\text{D}$ , range  $-0.72$  to  $-0.47\text{D}$  and  $0.39$  mm, range  $0.32$ – $0.46$  mm). Our progression findings were nearly 50% less than reported by Cheng *et al*<sup>19</sup> in a 3-year trial with bifocal and prismatic bifocal spectacle lenses which included subjects with fast myopia progression ( $-1.25 \pm 0.10\text{D}$  for the bifocal treatment group, and  $-1.01 \pm 0.13\text{D}$  for the prismatic bifocal treatment group).

### Myopia retardation in DIMS and Control-to-DIMS groups

The mean changes in SER and AL in the DIMS group were  $-0.18 \pm 0.37\text{D}$  and  $0.10 \pm 0.14$  mm in the first year and,  $-0.17 \pm 0.31\text{D}$  and  $0.10 \pm 0.11$  mm in the second year. In the first 2 years, myopia progression and axial elongation in the DIMS group were retarded by  $0.53\text{D}$  and  $0.29$  mm compared with the original control group.

The mean annual SER and AL changes in the historical control group aged from 10 to 15 years were  $-0.35\text{D}$  and  $0.18$  mm; when compared with the DIMS group's third year changes in SER and AL, myopia progression and axial elongation in the DIMS group were retarded by  $0.18\text{D}$  and  $0.08$  mm, respectively (figure 2B). The overall 3 years control effect in the DIMS group would be myopia retardation by  $0.71\text{D}$  and AL decrease by  $0.37$  mm.

Cheng *et al*<sup>19</sup> reported that in a selected group of fast progressing myopic children wearing executive top bifocal spectacles with and without prisms, lowered myopia progression by  $0.81\text{D}$  and  $1.05\text{D}$  compared with SV spectacle lenses wearing children. Chamberlain *et al*<sup>24</sup> showed that a dual power soft contact lens significantly slowed myopia progression by  $0.73\text{D}$  in children of various ethnicity aged 8–12 years. Walline *et al* reported in their BLINK clinical trial that children wearing high add power ( $+2.50\text{D}$ ) multifocal contact lenses had  $0.46\text{D}$  less myopia progression over 3 years.<sup>26</sup> The reduction of myopia progression by the wearing of DIMS lenses is comparable to the findings from these studies using bifocals, dual focus and multifocal soft contact lenses.

The subjects in the Control-to-DIMS group showed significant reductions in myopia progression and axial elongation after switching from SV to DIMS lenses wear (figure 2B). Their changes in SER and AL in the third year were comparable to the first-year changes in the DIMS group, even though these subjects were 2 years older. In comparison to the historical control group, their myopia progression and axial elongation in the third year, after adjustment were reduced by 86% and 61%, respectively.

In the third year, more than 80% of the Control-to-DIMS children had myopia progression less than  $0.5\text{D}$ , and approximately 70% showed progression less than  $0.25\text{D}$ . All these findings suggested that the myopia control effect was achieved even though the subjects started to wear DIMS lenses at an older age.

### Limitations

A limitation of this study was that the cohort used in the analyses comprised the DIMS plus the Control-to-DIMS groups of children so that the study was no longer randomised. This follow-up study, however, did benefit from the comparison of the third-year myopia progression findings in the DIMS group with the Control-to-DIMS group. While there were no statistically significant differences between the DIMS group and the historical control group at the start of the third year, there was a statistically significant difference in SER between the historical control group and the Control-to-DIMS group at baseline. This was because the historical control group was matched with the DIMS group at 24 months for age and SER and as the Control-to-DIMS group had no treatment in the first 2 years it could be expected to have more myopic SER. Although adjustment was made in the comparison, this approach does not eliminate the effect that can result from known or unknown factors, such as different examiners, the number of myopic parents and time spent on near and outdoor activities, and potentially could lead to selection bias for estimating the treatment efficacy of the DIMS lens.

## CONCLUSIONS

The DIMS spectacle lens slowed myopia progression and axial elongation in children throughout the 3 years of study and the myopia control effect was also demonstrated in the Control-to-DIMS group. These findings provided further evidence that DIMS lenses slowed myopia progression and axial elongation in children. The optimal age at which treatment should commence is still to be determined and further monitoring is required to ascertain the treatment effect over a longer period. We also plan to follow up on those children who discontinued wearing the DIMS lenses to determine if rebound occurs.

**Acknowledgements** HOYA provided the frames and lenses for the study. We are grateful for advice from Professor Marion Edwards. We would like to thank the

employees of Hoya for assisting the ordering and manufacturing of the lenses and Ms Yee Mui Kwok for liaison with the parents.

**Contributors** Writing—Original Draft: CSYL, WCT; Writing—Review and Editing: CSYL, WCT, PHL; Conceptualisation: CHT, CSYL, HQ; Project administration: CSYL, CHT, KH; Investigation: WCT, HYZ; Methodology: CSYL, CHT, WCT; Visualisation: CSYL, CHT, WCT. All the authors listed have been involved in the undertaking of the clinical trial and follow up study including the conception of the lens design, fabrication of the lens, registration of the clinical trial, preparation of clinical protocol, data collection and analysis, interpretation of the findings and conclusions. A number of manuscripts are now in preparation by the author team.

**Funding** This was a collaborative research project supported by HOYA, Tokyo, Japan (PolyU grant numbers ZG5N), other PolyU grants: ZVN1, ZVN2, ZE1A, 8-8475, and by an RGC Research Impact Fund: R5032-18. The sponsor also provided specially manufactured spectacle lenses and frames.

**Competing interests** This collaborative research was supported by HOYA Corporation, Tokyo, Japan. Patents titled 'Spectacle Lens' in China (CN104678572 B) and USA (US10268050 B2) were issued on 27 April 2018 and 23 April 2019 respectively.

**Patient consent for publication** Not required.

**Ethics approval** The study obtained the human ethical approval from the Departmental Research Committee of the School of Optometry, The Hong Kong Polytechnic University. The reference number is HSEAR20140630003-03. All aspects of the study met the tenets of the Declaration of Helsinki and were approved by the Human Subjects Ethics Subcommittee of the Hong Kong Polytechnic University (PolyU).

**Provenance and peer review** Not commissioned; externally peer reviewed.

**Data availability statement** Data are available on reasonable request. The primary and secondary outcomes and the baseline demography of the participants in the 2-year RCT and the third year study can be made available. Please contact CSYL at carly.lam@polyu.edu.hk.

**Supplemental material** This content has been supplied by the author(s). It has not been vetted by BMJ Publishing Group Limited (BMJ) and may not have been peer-reviewed. Any opinions or recommendations discussed are solely those of the author(s) and are not endorsed by BMJ. BMJ disclaims all liability and responsibility arising from any reliance placed on the content. Where the content includes any translated material, BMJ does not warrant the accuracy and reliability of the translations (including but not limited to local regulations, clinical guidelines, terminology, drug names and drug dosages), and is not responsible for any error and/or omissions arising from translation and adaptation or otherwise.

**Open access** This is an open access article distributed in accordance with the Creative Commons Attribution Non Commercial (CC BY-NC 4.0) license, which permits others to distribute, remix, adapt, build upon this work non-commercially, and license their derivative works on different terms, provided the original work is properly cited, appropriate credit is given, any changes made indicated, and the use is non-commercial. See: <http://creativecommons.org/licenses/by-nc/4.0/>.

#### ORCID iDs

Carly SY Lam <http://orcid.org/0000-0002-6808-5018>

Paul H Lee <http://orcid.org/0000-0002-5729-6450>

Han Yu Zhang <http://orcid.org/0000-0003-4932-1887>

#### REFERENCES

- Morgan IG, Ohno-Matsui K, Saw S-M. Myopia. *Lancet* 2012;379:1739–48.
- Holden BA, Fricke TR, Wilson DA, *et al*. Global prevalence of myopia and high myopia and temporal trends from 2000 through 2050. *Ophthalmology* 2016;123:1036–42.
- Lam CS-Y, Lam C-H, Cheng SC-K, *et al*. Prevalence of myopia among Hong Kong Chinese schoolchildren: changes over two decades. *Ophthalmic Physiol Opt* 2012;32:17–24.
- Vongphanit J, Mitchell P, Wang JJ. Prevalence and progression of myopic retinopathy in an older population. *Ophthalmology* 2002;109:704–11.
- Cheng SCK, Lam CSY, Yap MKH. Prevalence of myopia-related retinal changes among 12-18 year old Hong Kong Chinese high myopes. *Ophthalmic Physiol Opt* 2013;33:652–60.
- Xu L, Wang Y, Wang S, *et al*. High myopia and glaucoma susceptibility the Beijing eye study. *Ophthalmology* 2007;114:216–20.
- Holden B, Sankaridurg P, Smith E, *et al*. Myopia, an underrated global challenge to vision: where the current data takes us on myopia control. *Eye* 2014;28:142–6.
- Fricke TR, Holden BA, Wilson DA, *et al*. Global cost of correcting vision impairment from uncorrected refractive error. *Bull World Health Organ* 2012;90:728–38.
- Huang J, Wen D, Wang Q, *et al*. Efficacy comparison of 16 interventions for myopia control in children: a network meta-analysis. *Ophthalmology* 2016;123:697–708.
- Smith MJ, Walline JJ. Controlling myopia progression in children and adolescents. *Adolesc Health Med Ther* 2015;6:133–40.
- Tang WC, Leung M, Wong ACK. Optical interventions for myopia control. In: Ang M, Wong T, eds. *Updated on myopia*. Singapore: Springer, 2020.
- Chua W-H, Balakrishnan V, Chan Y-H, *et al*. Atropine for the treatment of childhood myopia. *Ophthalmology* 2006;113:2285–91.
- Chia A, Chua W-H, Cheung Y-B, *et al*. Atropine for the treatment of childhood myopia: safety and efficacy of 0.5%, 0.1%, and 0.01% doses (Atropine for the Treatment of Myopia 2). *Ophthalmology* 2012;119:347–54.
- Clark TY, Clark RA. Atropine 0.01% eyedrops significantly reduce the progression of childhood myopia. *J Ocul Pharmacol Ther* 2015;31:541–5.
- Yam JC, Jiang Y, Tang SM, *et al*. Low-Concentration Atropine for Myopia Progression (LAMP) Study: A Randomized, Double-Blinded, Placebo-Controlled Trial of 0.05%, 0.025%, and 0.01% Atropine Eye Drops in Myopia Control. *Ophthalmology* 2019;126:113–24.
- Cho P, Cheung S-W. Retardation of myopia in Orthokeratology (ROMIO) study: a 2-year randomized clinical trial. *Invest Ophthalmol Vis Sci* 2012;53:7077–85.
- Hiraoka T, Kakita T, Okamoto F, *et al*. Long-term effect of overnight orthokeratology on axial length elongation in childhood myopia: a 5-year follow-up study. *Invest Ophthalmol Vis Sci* 2012;53:3913–9.
- Santodomingo-Rubido J, Villa-Collar C, Gilmartin B, *et al*. Myopia control with orthokeratology contact lenses in Spain: refractive and biometric changes. *Invest Ophthalmol Vis Sci* 2012;53:5060–5.
- Cheng D, Woo GC, Drobe B, *et al*. Effect of bifocal and prismatic bifocal spectacles on myopia progression in children: three-year results of a randomized clinical trial. *JAMA Ophthalmol* 2014;132:258–64.
- Sankaridurg P, Holden B, Smith E, *et al*. Decrease in rate of myopia progression with a contact lens designed to reduce relative peripheral hyperopia: one-year results. *Invest Ophthalmol Vis Sci* 2011;52:9362–7.
- Lam CSY, Tang WC, Tse DY-Y, *et al*. Defocus incorporated soft contact (disc) lens slows myopia progression in Hong Kong Chinese schoolchildren: a 2-year randomised clinical trial. *Br J Ophthalmol* 2014;98:40–5.
- Aller TA, Liu M, Wildsoet CF. Myopia control with bifocal contact lenses: a randomized clinical trial. *Optom Vis Sci* 2016;93:344–52.
- Walline JJ, Greiner KL, McVey ME, *et al*. Multifocal contact lens myopia control. *Optom Vis Sci* 2013;90:1207–14.
- Chamberlain P, Peixoto-de-Matos SC, Logan NS, *et al*. A 3-year randomized clinical trial of MiSight lenses for myopia control. *Optom Vis Sci* 2019;96:556–67.
- Lam CSY, Tang WC, Tse DY-Y, *et al*. Defocus incorporated multiple segments (DIMS) spectacle lenses slow myopia progression: a 2-year randomised clinical trial. *Br J Ophthalmol* 2020;104:363–8.
- Walline JJ, Walker MK, Mutti DO, *et al*. Effect of high add power, medium add power, or single-vision contact lenses on myopia progression in children: the blink randomized clinical trial. *JAMA* 2020;324:571–80.